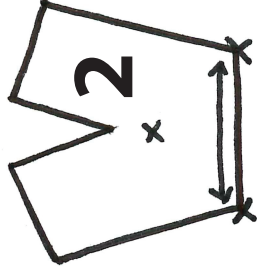
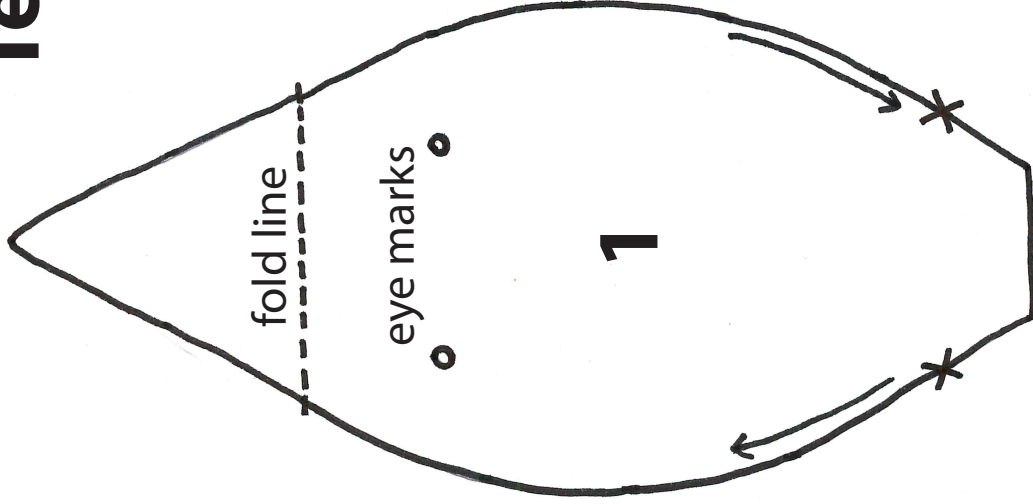


# Baby Owl Pattern



## Templates

**CAUTION:**  
Templates do NOT  
include any seam  
allowance



# Baby Owl Pattern

## Materials

- 2 pieces of contrasting fabric (each 4"x 7")
- 1 piece of felt (2" x 2")
- 2 safety eyes or 2 buttons
- Strong card for templates
- Toy stuffing or polyfill etc

## Tools

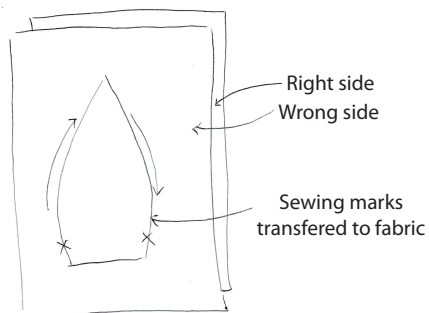
- Sharp scissors (to cut fabric)
- Needle and thread (complimentary to your fabric colour)
- (Optional) A sewing machine for step 2
- Removable fabric marker or pencil
- Turning tool (a chopstick will do)



© Melissa Brooks, 2011  
 No part of these instructions or templates may be copied, sold or distributed.  
 No product made from these instructions or templates may be sold without permission from the owner

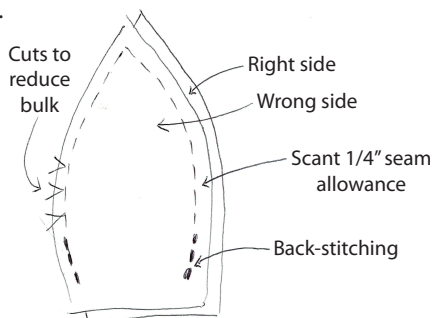
1. Transfer the two paper templates to the strong card. This is so you can have a re-usable template for later. Remember to transfer all the sewing marks, fold marks and eye locations etc., cut them out.

Place the Template 1 card onto the wrong side of one of the pieces of fabric. Trace around the templates and mark the sewing indicators. The other eye and fold marks are not required yet.



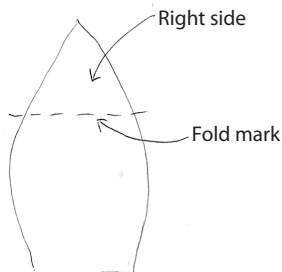
2. Place the two fabric pieces right sides together and pin. Sew around shape as directed in the diagram, back stitch the start and end.

Trim around the stitching with a scant 1/4" allowance (this just means dont be generous with the 1/4" rather have it less than more). Make little snips at the curved parts to reduce the bulk at the seams.



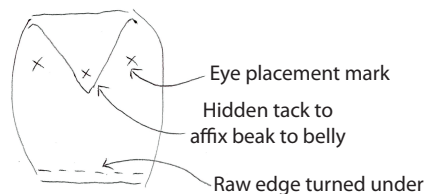
3. Turn it inside out, use your turning tool to help push out the peak of the beak!

Place your Template 1 back onto the front of your owl (the side that is going to be the belly). Mark or finger press the fold line and mark the eye locations.



4. Fold the beak over and put a small hidden tacking stitch to attach the underside of the beak to the belly fabric (ie dont sew all the way through all four layers of fabric!)

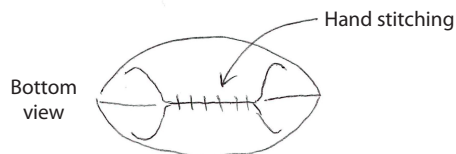
Attach the eyes you have chosen, use the eye locations as a guide as it can change the character of your owl by having a play with the placement of the eyes.



5. Stuff him fairly firmly, again this is something you will have to judge, but I often end up using more than I thought.

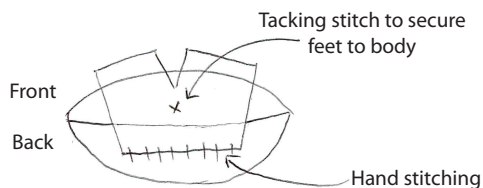
You will close him up the same way you wrap the side of present, first turn the edge under a fraction to hide the raw /fraying fabric then judge if you need to trim some of the fabric off the end.

With the raw edge turned under slightly, push the sides in then push the front and back "flaps" in towards the middle where you can sew him shut.



6. Take your Template 2 and cut a piece of felt out exactly to that shape, mark it out if you need to.

Attach the feet by using the diagram to guide you, sew the longer line first then add a tack towards the middle of the felt foot to secure it to the body.



7. Check the owl for any fabric pencil or marker that may need removing

Enjoy!

\*Instruction illustrations are indicative only and are not to scale